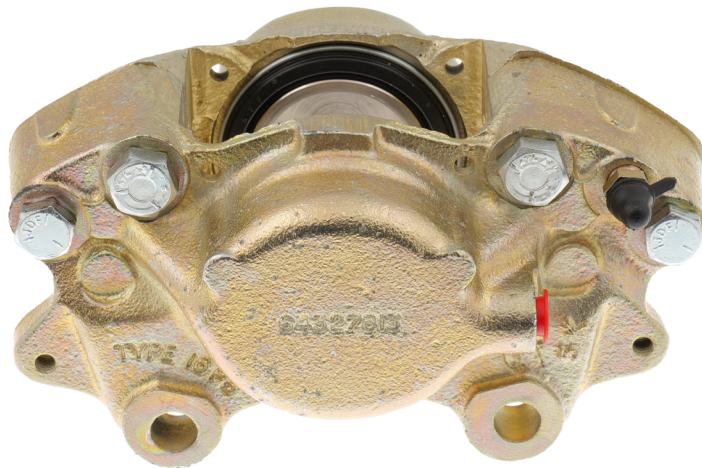
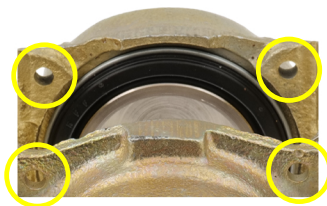


Type M16PB Brake Caliper Identification 159026 & 159027



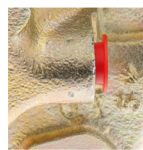
Solid Piston Seals
(with metal retaining clip)
Seal Kit: **519731**



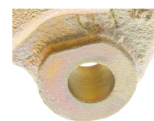
3/16" Brake Pad
Retaining Pins
Pads: **GBP216**
Fitting Kit: **GRPFK2**



Usually Cast with
"TYPE 16PB" Identification
Mark



Metric Brake
Pipe Thread
Use Link Pipe: **312550**



Metric Mounting Bolt Hole Size
0.480" / 12mm
Bolt: **158668**
Locking Washer: **GHF335**

QUALITY PARTS AND ACCESSORIES

